

DS1005 SERIES

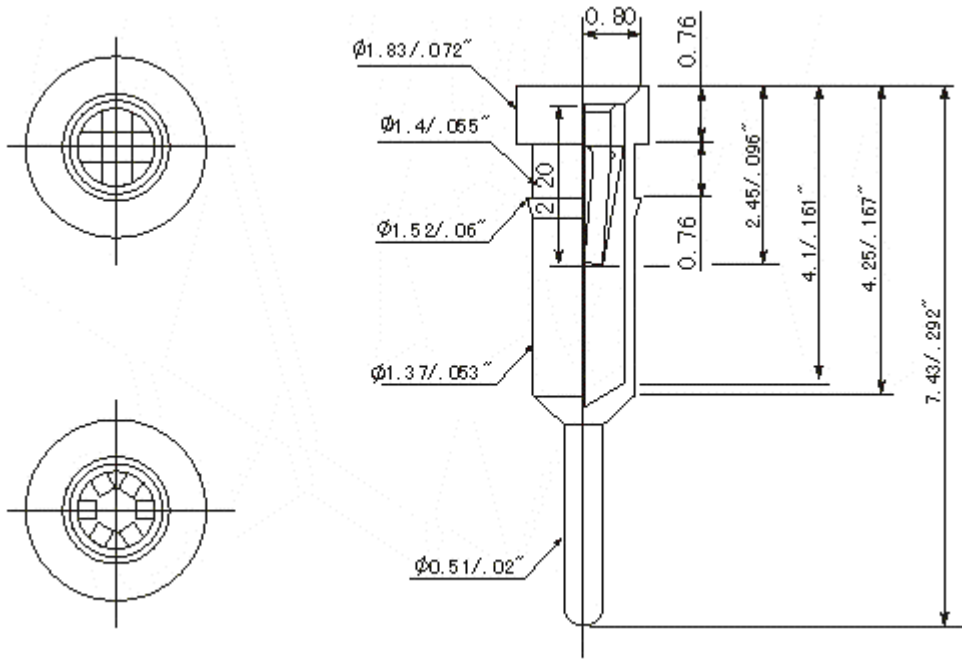


MATERIAL

Pin(Outer sleeve):Brass,machined,CuZn38Pb2  
Clip(contact4/6 finger):Beryllium Copper,heat treated  
Plating(Outer sleeve):  
Tin plated:2μm/80μ"  
Nickel,5μm/200μ"  
Gold plated:2μm/80μ"  
nickel,full gold flash

Electrical

Current rating:3Amps/contact max.  
Contact resistance:≤4mΩ/contact  
Mechanical  
Average insertion force:4-finger≤250g  
with steel pin of:6-finger≤80g  
Φ0.43mm/0.017"  
Mechanical life:min.200



Ordering Information

Series No .

DS1005

Clip Number

4

4 4-finger  
6 6-finger

Pin & Clip Number

0

Code Clip plated Pin plated  
0 Gold flash Tin 200 μ"  
1 Gold 10 μ" Tin 200 μ"  
2 Gold 30 μ" Tin 200 μ"  
3 Tin 200 μ" Tin 200 μ"  
4 Gold flash Gold flash  
5 Gold 10 μ" Gold flash  
6 Gold 30 μ" Gold flash

Pin length

0

Code Length  
0 7.43mm  
Additional terminal  
types available